



Fact Sheet

San Gold Corporation
 "SGR" on TSXV
 "SGRCF" OTC
www.sangoldcorp.com
info@sangoldcorp.com
 1-800-321-8564

San Gold's Rice Lake Gold Mine in Manitoba

SGR — TSXV



Results Pending from Deep Mine Massive Sulfide with abundant Visible Gold

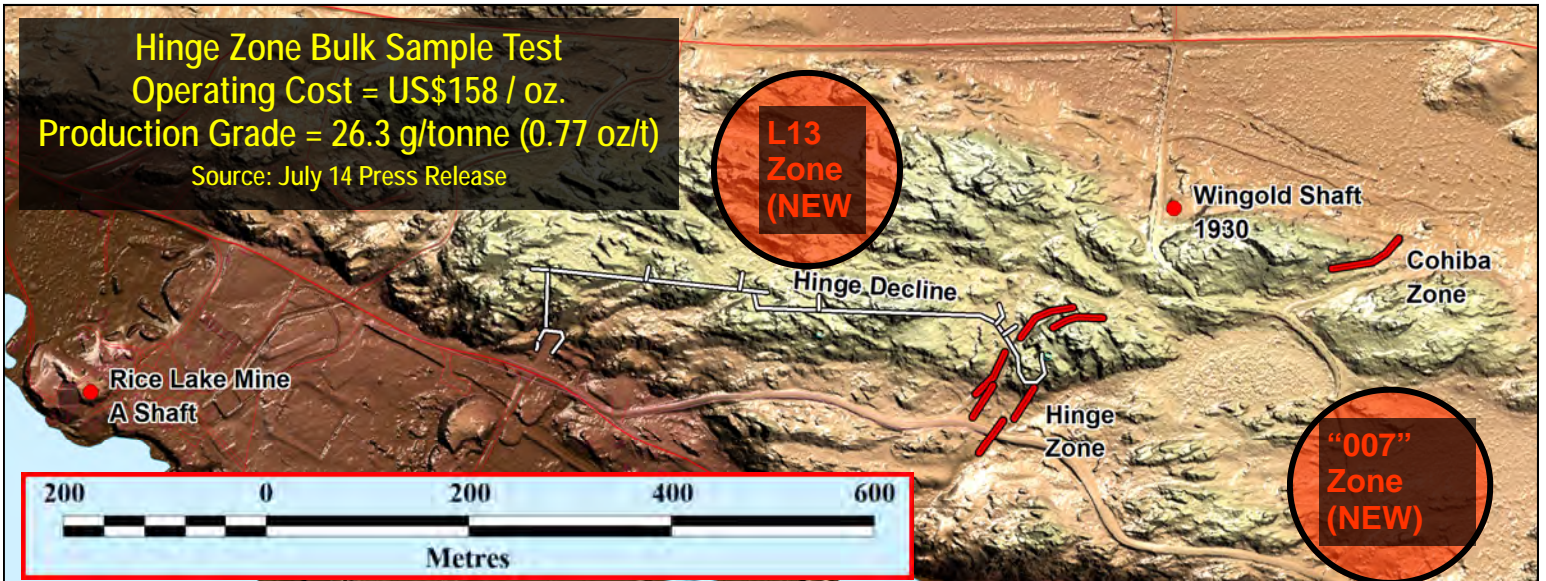
About San Gold.....

San Gold Corporation is a Canadian mining company focused on gold exploration and mining in the Rice Lake Greenstone Belt in SE Manitoba, Canada. The Company's Rice Lake Gold Project includes two mines: the deep underground, high-grade Rice Lake mine and the nearby near-surface, ramp accessed new High-Grade Hinge Deposit deposit. The modern 1250 ton per day Rice Lake mill will be expanded to 1900 tons per day by the end of 2011. Both mines are in development and production is anticipated to reach a targeted 800 tons per day in 2009.

In 2006, the Cartwright gold deposit was discovered 800 metres west of the Rice Lake mine and in early 2008 the high grade Hinge gold zone was discovered one kilometre east of the Rice Lake mine. The Hinge Zone is currently undergoing development production while intense surface and underground exploration is rapidly developing new high grade gold zones.

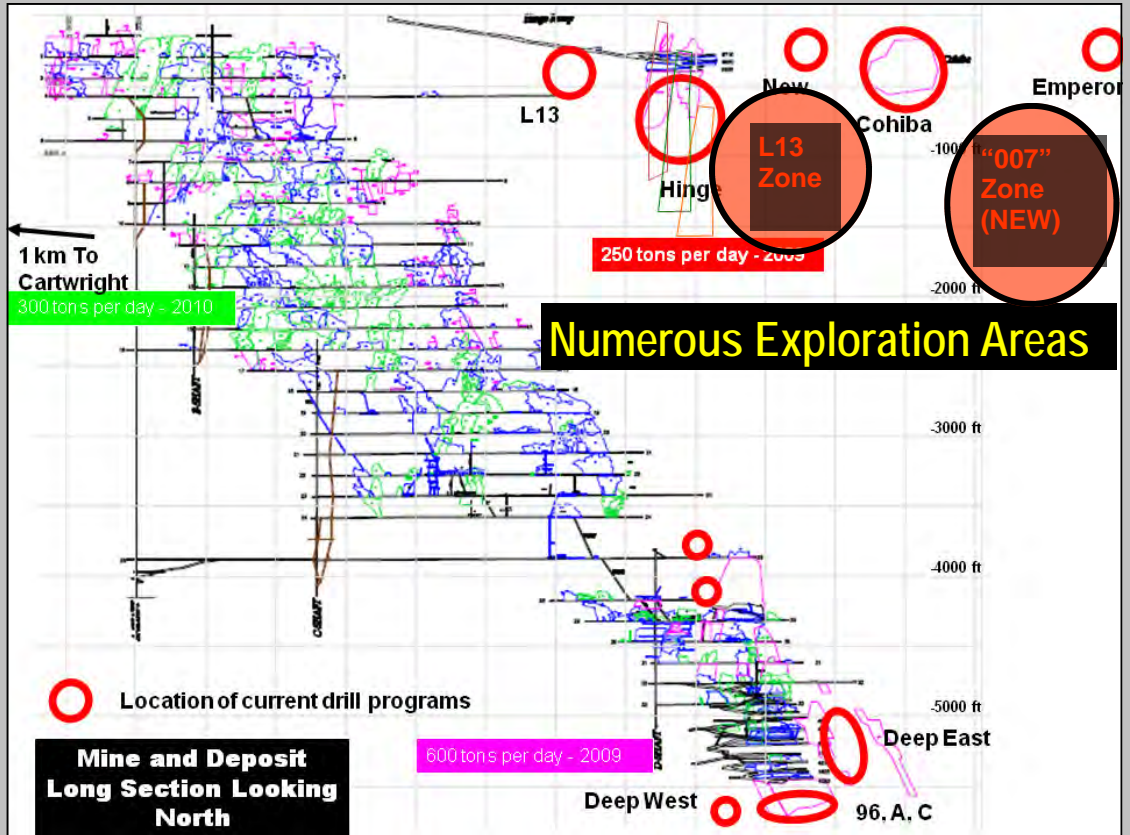
San Gold also owns or controls nearly 15,000 hectares (35,000 acres) of exploration lands along the Rice Lake Greenstone Belt of SE Manitoba. The Company has increased its ore resources and reserves from 550,000 gold ounces (audited, all categories) when it acquired the Rice Lake Project in 2004 to over 1,600,000 gold ounces (audited, all categories) by the end of 2006. A new 43-101 resource report is in preparation to incorporate the substantial discoveries made in 2007 and 2008

Hinge Zone Bulk Sample Test
Operating Cost = US\$158 / oz.
Production Grade = 26.3 g/tonne (0.77 oz/t)
 Source: July 14 Press Release



Why Own San Gold?

1. We are a pure gold play. We do not hedge, we do not speculate on gold prices.
2. We produce gold from two gold mines near our mill,that's two producing mines so far, and three more gold deposits in the development stage.
3. We are located in Manitoba, Canada, the most politically stable, safe and mining friendly jurisdiction in the world.
(...according to a Fraser Institute survey)
4. We are a rapidly emerging and, as yet, unrecognized gold producer with a low market capitalization.
5. We are an aggressive and very successful gold explorer. We have found three new mines in three years, near our existing mines. Our strategy is to continue to increase our gold resource base.
6. We deliver. Our official gold resource count doubled from 2004 to 2006 and we expect to add more as a result of our very recent high-grade surface and underground discoveries.
7. We have an experienced and very aggressive management team of mine builders.



SHARE STRUCTURE & CAPITALIZATION as at November 15, 2008

Common Shares	265,496,608
Options	14,288,896
Fully Diluted	279,785,504

**Cash on Hand = \$30,000,000
as at November 15, 2009**

52 Week Range	C\$0.57 - \$3.30
Management & Insiders	12%
Institutional Holdings	60%